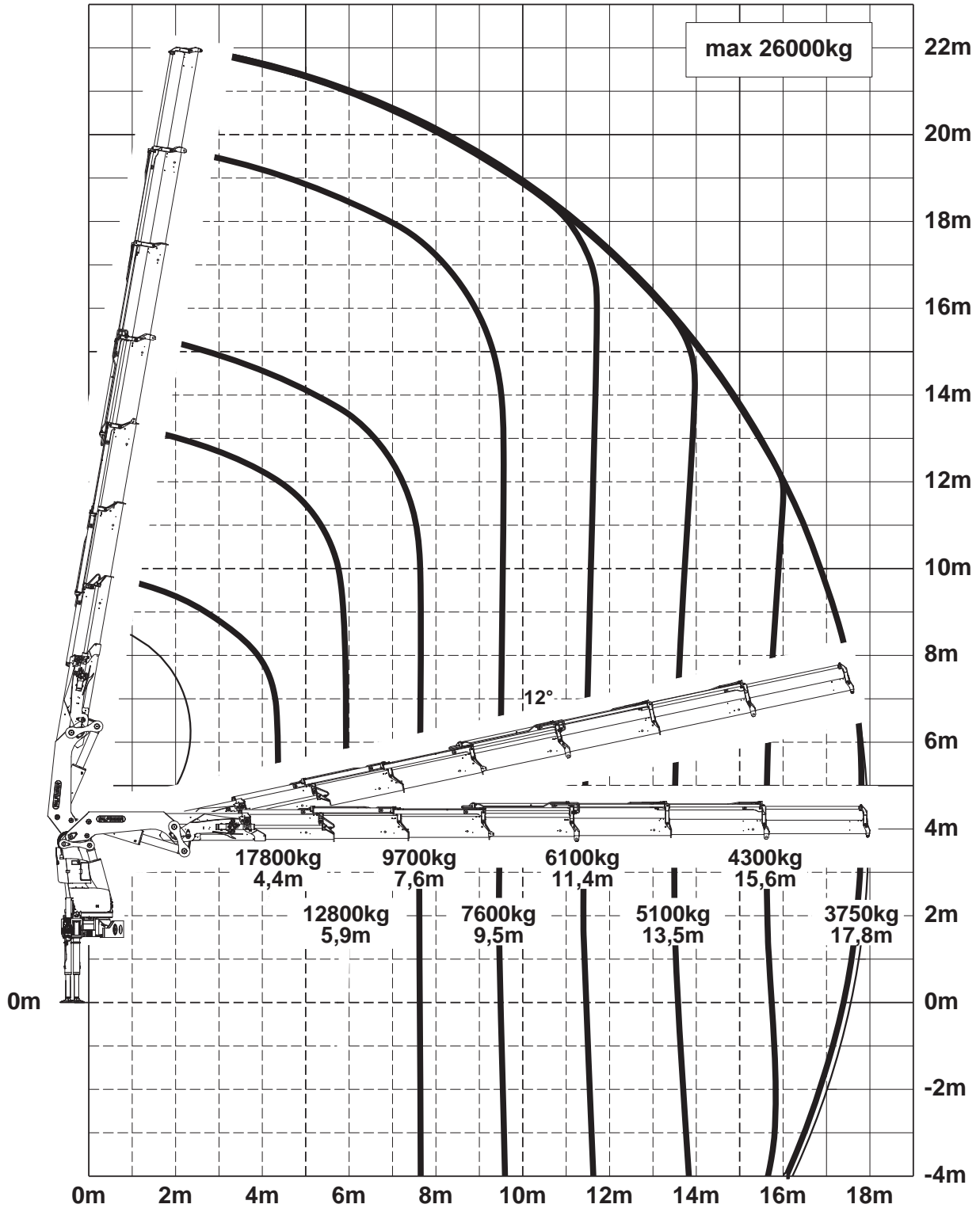


Subject to change, production tolerances have to be taken into account.



Symbolic crane figure, indications at 20° main boom position & load arm in horizontal position



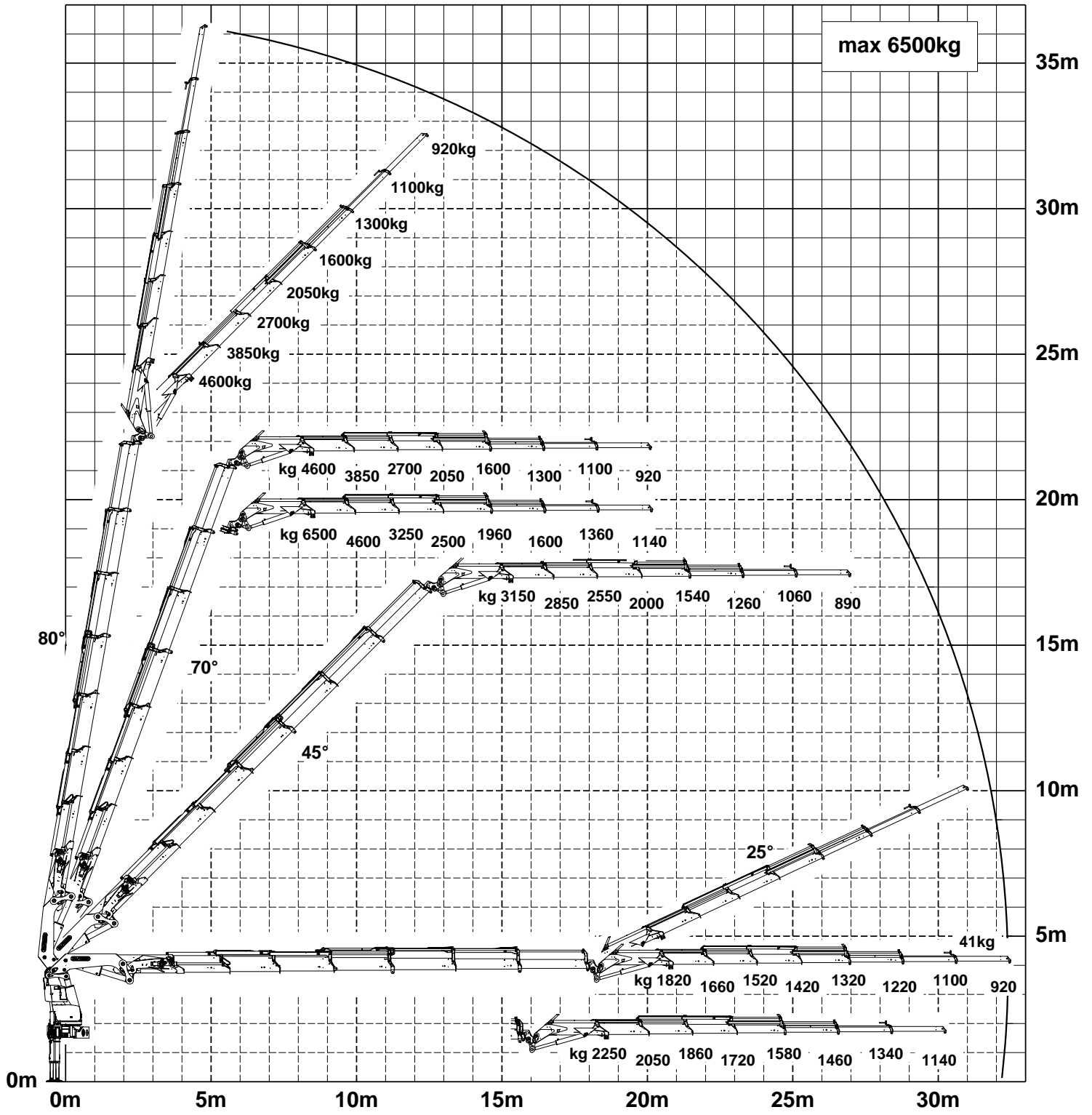
For Rope winch load capacity refer to page

Page 020.31100 2.5t

Page 020.32100 3.5t

Subject to change, production tolerances have to be taken into account.

**DPS** plus  
Dual Power System



When using mechanical boom extensions, the loads shown on the charts need to be reduced by the weight of these extensions. Symbolic crane figure, indications at 20° main boom position & load arm in horizontal position



For Rope winch load capacity refer to page

Page 020.31100 2.5t

Page 020.32100 3.5t